

ChangeAhead™
Make every employee a Change-Enabler!

Course designed for

WORKFORCE | EMPLOYEES

ChangeAhead™

for adapting and enabling change!

Adaptability ▪ Change Awareness ▪ Higher Purpose ▪ Industry Agnostic Approach

BUSINESS ACUMEN

TECHNOLOGY ACUMEN

USABLE KNOWLEDGE

LEARNABILITY and LEARNING AGILITY

CHANGE ENABLEMENT ESSENTIALS

CAREER FULFILLMENT

HIGHER PURPOSE FOR LIFE!

ADAPTABLE MINDSET

Organizations spend millions of dollars every year on Learning & Development in the hope of preparing and engaging employees to compete well and outplay disruptions. Yet results remain abysmally low - less than 13% of employees are engaged, globally (Gallop survey).

This is because traditional 'skill development' drives employees to be more transactional and routinized, at the expense of developing a resourceful and adaptable mindset. An 'always-on' transformation demands professional versatility to cope with changing business and technology compulsions and the readiness the company will need to survive near-constant disruptions.

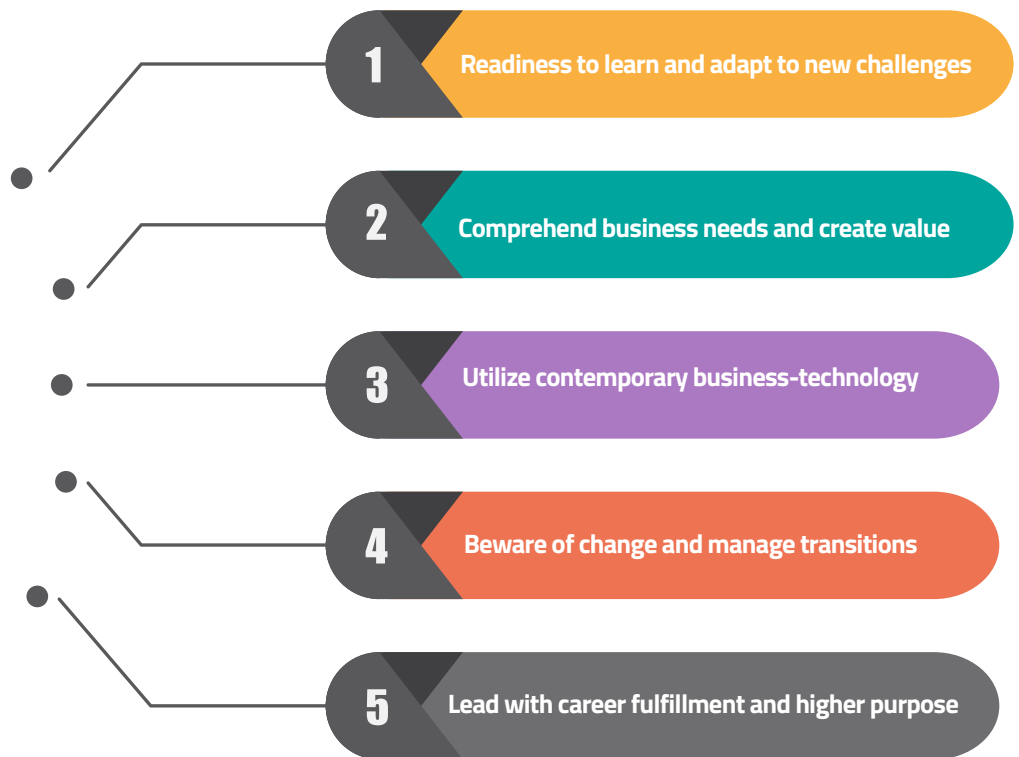
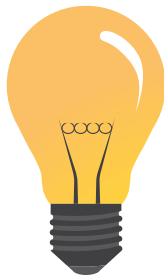
CHANGE with *ChangeAhead™*

Even the most "routine" work is becoming far less so and employees need help to develop the creative aspects of their jobs with change awareness and the ability to deal with ambiguity.

The course is designed to help like a 'valuable anchor' for developing professional versatility. It imparts tangible, practical and immediately useable knowledge to evolve, engage and to support change and transformation irrespective of their career trajectory!

DISRUPTIVE MARKETS and the NEED FOR ADAPTABLE WORKFORCE

*Make every employee
a Change- enabler*



Gift ChangeAhead™ to your employees!

TRANSFORMATIONAL

ChangeAhead™ is based on the profound concept that “To build a ship, don’t drum up the men and women to gather wood, divide the work, and give orders. Instead, teach them to yearn for the vast and endless sea and sailing”

PROVEN

Content developed from decades of learning and practical experiences. Employers in the US, UAE and India have found employees who took the course have developed tremendous commitment and readiness to enable change irrespective of their roles, academic backgrounds and career trajectory.

PIVOT OF BEING THE CHANGE-ENABLER!

Quick-n-Easy Learning

Watch-and-learn through animated explanatory videos with many simple, lucid and contemporary examples, analogies and interactive sessions.

Learning Ahead

Impart the foundational knowledge and change imperatives to help employees evolve, and to own and enable transformation.

Rationale

Foundational learning is at the heart of a professional’s ability to adapt to rapidly changing environments and lead a fulfilling career.



Unlock Employee Potential

Build resourceful mindset, commit to value value creation, and contribute to innovation and transformation!

Adapt. Stay Agile

Think big. Think different. Relate. Connect and Repurpose. Work with Professional Versatility to evolve as a contributor and change enabler!

ChangeAhead™

USABLE KNOWLEDGE, VIDEO-BASED ANIMATED LEARNING WITH INTERACTIVE SESSIONS

BUSINESS ACUMEN ESSENTIALS

Understanding business terms, models and big picture, how a business makes money, to create value and more!

TECHNOLOGY ACUMEN ESSENTIALS

Information Technology terms, evolution of IT ecosystem up to Artificial Intelligence, Internet of Things, and more!

BUSINESS-IT ACUMEN ESSENTIALS

Business, Market and Competitive Intelligence, Business & Data Analysis, Transformation; Systems and how their alignment with business for decision-making, to create value and more!

CHANGE AWARENESS ESSENTIALS

Learn why companies change, learn & unlearn, and monitor and manage one’s own transitions and support the change and transformational efforts.

HIGHER PURPOSE FOR LIFE!

Discuss ways to lead a meaningful and successful career, unlock potential to realize goals, connect and lead career with fulfillment and higher purpose!



OUR OFFERINGS

Deployment of the course is simple to choose from the following service offerings.

- **ONLINE:** Enterprise mandates employees to take the course through our self-paced online Learning Management System, and to obtain Course Completion Certificates
- **SEMINAR SET UP:** Deliver the course with Interactive sessions typically in a 1 or 2-day event
- **PROGRAM:** Develop an End-to-End 'Employee Change Enablement Program' for simultaneous learning embedded with regular employee Learning & Human Capital Development programs

TrainedArrow™

SAMP RAD, LLC.

North Brunswick, NJ. USA

New York, Chicago, GCC, India

www.samprad.net ... www.trainedarrow.com

Email: sales@samprad.net Phone: 609-658-3053